

GLIS1 antibody (mAb)

Catalog Nos: 61801, 61802

RRID: AB_2793772

Clone: 7-14

Isotype: IgG1, k

Application(s): IF, WB

Reactivity: Human, Mouse

Quantities: 100 µg, 10 µg

Purification: Protein G Chromatography

Host: Rat

Concentration: 1 µg/µl

Molecular Weight: 95 kDa

Background: **GLIS1** (Glis Family Zinc Finger 1) belongs to a GLIS subfamily of Krüppel-like zinc-finger transcription factors characterized to regulate a set of downstream targets essential for cellular functions, including pancreatic development, β -cell maturation and maintenance, and insulin production. GLIS1 is enriched in unfertilized eggs and embryos and it can be used to promote direct reprogramming of somatic cells to induced pluripotent stem cells (iPS cells). GLIS1 may regulate the expression of numerous genes, either positively or negatively, and is implicated in mitral valve development, where dysregulation may lead to mitral valve prolapse (MVP).

Immunogen: This antibody was raised against a peptide within the amino-terminal half of human GLIS1 (GLI-similar 1), which shares homology with mouse GLIS1.

Buffer: Purified IgG in PBS with 30% glycerol and 0.035% sodium azide. Sodium azide is highly toxic.

Application Notes:

Applications Validated by Active Motif:

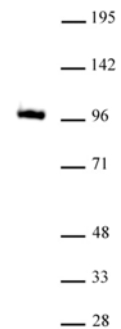
WB*: 0.5 - 2 µg/ml

IF: 1-2 µg/ml

*Note: many chromatin-bound proteins are not soluble in a low salt nuclear extract and fractionate to the pellet. Therefore, we recommend a High Salt / Sonication Protocol when preparing nuclear extracts for Western blot.

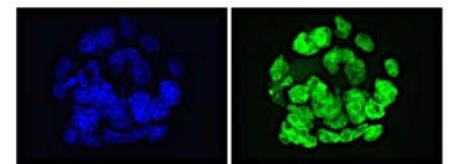
Storage and Guarantee: Some products may be shipped at room temperature. This will not affect their stability or performance. Avoid repeated freeze/thaw cycles by aliquoting items into single-use fractions for storage at -20°C for up to 2 years. Keep all reagents on ice when not in storage. This product is guaranteed for 12 months from date of receipt.

This product is for research use only and is not for use in diagnostic procedures.



GLIS1 antibody (mAb) tested by Western Blot.

20 µg of mouse embryonic stem cell (ES cells) nuclear extract was probed with GLIS1 antibody at 2 µg/ml. The MW of GLIS1 is approximately 95 kDa.



GLIS1 antibody (mAb) tested by Immunofluorescence.

Formaldehyde-fixed mouse embryonic stem cells (ES cells). Left panel: DAPI staining. Right Panel: GLIS1 antibody.