

## Supt5H/SPT5 antibody (mAb)

**Catalog Nos:** 65689, 65690

**RRID:** AB\_3216333

**Clone:** 6F1

**Application(s):** ChIP-Seq, IP, WB

**Reactivity:** Human

**Quantities:** 100 µg, 10 µg

**Purification:** Protein G Chromatography

**Host:** Rat

**Isotype:** IgG1

**Molecular Weight:** 140 kDa

**Background:** SUPT5H (SPT5 Homolog, DSIF Elongation Factor Subunit) is a transcription elongation factor which regulates mRNA processing and transcription elongation by RNA polymerase II. SUPT5H positively regulates mRNA capping by stimulating the mRNA guanylyltransferase activity of RNGTT/CAP1A. SUPT5H also acts cooperatively with the negative elongation factor complex (NELF complex) to enhance transcriptional pausing at sites proximal to the promoter. Diseases associated with SUPT5H include HIV-1. Among its related pathways are mRNA capping and HIV life cycle.

**Immunogen:** This antibody was raised against a synthetic peptide derived from the human SPT5 C-terminal region.

**Buffer:** Purified IgG in PBS with 30% glycerol and 0.035% sodium azide. Sodium azide is highly toxic.

### Application Notes:

Applications Validated by Active Motif:

ChIP-Seq: 4 µg per ChIP

WB\*: 0.5 - 2 µg/ml

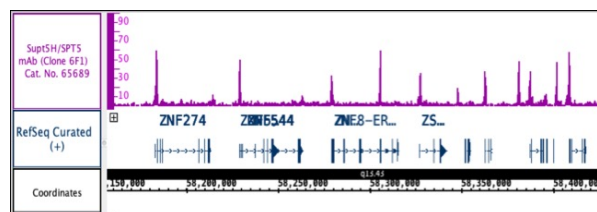
IP: 5 µg/ml

\*Note: Many chromatin-bound proteins are not soluble in a low salt nuclear extract and fractionate to the pellet. Therefore, we recommend a High Salt / Sonication Protocol when preparing nuclear extracts for Western blot.

This antibody is also available as an AbFlex® engineered recombinant antibody. For details on the corresponding AbFlex Recombinant Antibody, see Catalog No. 91331.

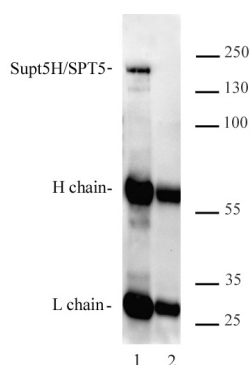
**Storage and Guarantee:** Some products may be shipped at room temperature. This will not affect their stability or performance. Avoid repeated freeze/thaw cycles by aliquoting items into single-use fractions for storage at -20°C for up to 2 years. Keep all reagents on ice when not in storage. This product is guaranteed for 12 months from date of receipt.

This product is for research use only and is not for use in diagnostic procedures.



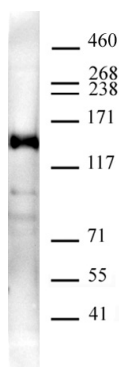
#### Supt5H/SPT5 antibody (mAb) tested by ChIP-Seq

Chromatin immunoprecipitation (ChIP) was performed using the ChIP-IT® High Sensitivity Kit (Cat. No. 53040) with 30 µg of K562 cell chromatin and 4 µg of antibody. ChIP DNA was sequenced on the Illumina NextSeq and 12 million sequence tags were mapped to identify Supt5H binding sites on chromosome 19.



#### Supt5H/SPT5 antibody (mAb) tested by Immunoprecipitation

5 µg of Supt5H antibody (Lane 1) or an unrelated IgG (Lane 2) was used to immunoprecipitate Supt5H from 300 µg of K562 nuclear extract. The immunoprecipitated protein was detected by Western blotting using a the same Supt5H antibody at 2 µg/ml (crossreaction between heavy and light chains of the antibody is observed and is common).



#### Supt5H/SPT5 antibody (mAb) tested by Western blot

20 µg of K562 nuclear extract was run on SDS-PAGE and probed with antibody at 2 µg/ml.