

## Bcl7A antibody (pAb)

**Catalog Nos:** 65695, 65696**RRID:** AB\_3216388**Application(s):** IP, WB**Reactivity:** Human**Volumes:** 100 µl, 10 µl**Purification:** Affinity Purified**Host:** Rabbit**Isotype:** IgG**Molecular Weight:** 45 kDa

**Background:** Bcl7A (B-cell CLL/lymphoma 7 protein family member A) is a gene which was identified in translocation in Burkitt Lymphoma cells, and has been associated with chromosomal aberrations leading to B-cell non-Hodgkin lymphoma, and is expressed in the majority of precursor and mature B cell lymphomas. The three known BCL7 proteins (BCL7A, BCL7B, and BCL7C) share sequence homology and may play a role in chromatin remodeling.

**Immunogen:** This antibody was raised against a peptide within human BCL7A.

**Buffer:** Purified IgG in 70 mM Tris, 105 mM NaCl, 0.07 mM EDTA, 31 mM glycine, 0.035% sodium azide, 30% glycerol, and 0.5 mg/ml BSA. Sodium azide is highly toxic.

**Application Notes:**

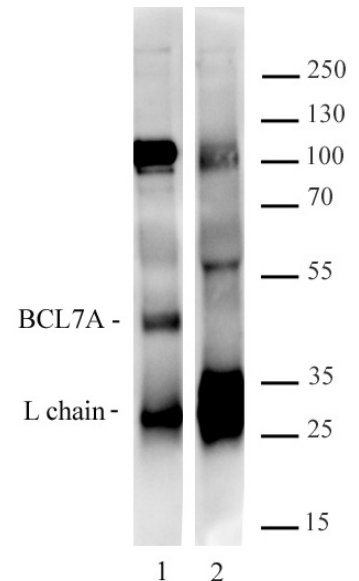
Applications Validated by Active Motif:

WB: 1:500 dilution

IP: 5 µl per IP

**Storage and Guarantee:** Some products may be shipped at room temperature. This will not affect their stability or performance. Avoid repeated freeze/thaw cycles by aliquoting items into single-use fractions for storage at -20°C for up to 2 years. Keep all reagents on ice when not in storage. This product is guaranteed for 12 months from date of receipt.

This product is for research use only and is not for use in diagnostic procedures.

**Bcl7 antibody (pAb) tested by Immunoprecipitation**

5 µl of Bcl7A antibody (Lane 1) or an unrelated IgG (Lane 2) was used to immunoprecipitate Bcl7A from 500 µg of HEK293 whole cell extract. The immunoprecipitated protein was detected by Western blotting using a the same Bcl7A antibody at a dilution of 1:1000 (crossreaction between heavy and light chains of the antibody is observed and is common).