

FEN1 antibody (pAb)

Catalog Nos: 65709, 65909, 65710**RRID:** AB_3216394**Application(s):** WB**Reactivity:** Human, Mouse**Volumes:** 100 µl, 50 µl, 10 µl**Purification:** Affinity Purified**Host:** Rabbit**Isotype:** IgG**Molecular Weight:** 42 kDa

Background: FEN1 - Flap endonuclease 1 (is recognized as a pivotal factor in DNA replication, long-patch excision repair, and telomere maintenance. FEN1 removes 5' overhanging flaps in DNA repair and processes the 5' ends of Okazaki fragments in lagging strand DNA synthesis.

Immunogen: This FEN1 antibody was raised against a peptide containing human Flap endonuclease

Buffer: PBS containing 30% glycerol, 0.035% sodium azide and 0.5 mg/ml BSA. Sodium azide is highly toxic.

Application Notes:

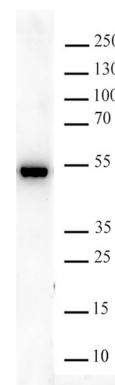
Applications Validated by Active Motif:

WB: 1:250-1:1000 dilution

*Note: Many chromatin-bound proteins are not soluble in a low salt nuclear extract and fractionate to the pellet. Therefore, we recommend a High Salt / Sonication Protocol when preparing nuclear extracts for Western blot. For optimal results, we recommend the addition of 0.05% Tween-20 to all blocking solutions to reduce background in Western blot.

Storage and Guarantee: Some products may be shipped at room temperature. This will not affect their stability or performance. Avoid repeated freeze/thaw cycles by aliquoting items into single-use fractions for storage at -20°C for up to 2 years. Keep all reagents on ice when not in storage. This product is guaranteed for 12 months from date of receipt.

This product is for research use only and is not for use in diagnostic procedures.

**FEN-1 antibody (pAb) tested by Western blot.**

Detection of FEN-1 by Western blot. The analysis was performed using HeLa nuclear extract (20 µg) at a 1:250 dilution.