

BRD7 antibody (pAb)

Catalog Nos: 65724, 65924, 65725**RRID:** AB_3216385**Application(s):** WB**Reactivity:** Human**Volumes:** 100 µl, 50 µl, 10 µl**Purification:** Affinity Purified**Host:** Rabbit**Isotype:** IgG**Molecular Weight:** 75 kDa

Background: **BRD7 (Bromodomain-containing protein 7, aka CELTIX1)** is a chromatin-associated protein component of both functional p53 and BRCA1 (breast cancer 1, early onset) pathways. **BRD7** inhibit4ed cancer cell growth and metastasis and promotes apoptosis in vitro and in vivo via downregulating AKT pathway. **BRD7** may also regulate signaling pathways like ras-raf-MEK-ERK and RB/E2F. Previous studies have also demonstrated that **BRD7** was downregulated in huma breast cancer, and the downregulation is associated with tumor progression.

Immunogen: This BRD7 antibody was raised against a peptide within the C-terminal region of human BRD7.

Buffer: Purified IgG in 70 mM Tris, 105 mM NaCl, 0.07 mM EDTA, 31 mM glycine, 0.035% sodium azide, 30% glycerol, 0.5mg/mL BSA

Application Notes:

Applications Validated by Active Motif:

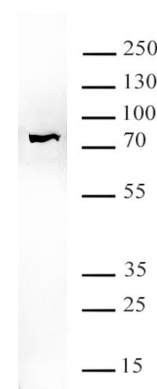
WB*: 1:500 - 1:2,000 dilution

For optimal results, primary antibody incubations should be performed at room temperature. The addition of 0.05% Tween 20 to all blocking solutions may also reduce background. Individual optimization may be required.

*Note: Many chromatin-bound proteins are not soluble in a low salt nuclear extract and fractionate to the pellet. Therefore, we recommend a High Salt / Sonication Protocol when preparing nuclear extracts for Western blot.

Storage and Guarantee: Some products may be shipped at room temperature. This will not affect their stability or performance. Avoid repeated freeze/thaw cycles by aliquoting items into single-use fractions for storage at -20°C for up to 2 years. Keep all reagents on ice when not in storage. This product is guaranteed for 12 months from date of receipt.

This product is for research use only and is not for use in diagnostic procedures.

**BRD7 antibody (pAb) tested by Western blot.**

Hela nuclear extract (20 µg) was probed with BRD7 antibody at a 1:2000 dilution.