

## YTHDF1 antibody (pAb)

**Catalog Nos:** 65736, 65936, 65737

**RRID:** AB\_3216294

**Application(s):** IP, WB

**Reactivity:** Human

**Quantities:** 100 µg, 50 µg, 10 µg

**Purification:** Protein A Chromatography

**Host:** Rabbit

**Isotype:** IgG

**Molecular Weight:** 70 kDa

**Background:** N6-methylated adenine (m6A) is prevalently present in nearly all RNA types and can be found in all organisms from bacteria to humans. It preferentially appears around stop codons and within long internal exons in mammalian messenger RNAs. m6A plays an important role in the efficiency of mRNA splicing, processing, translation efficiency, editing and mRNA stability. m6A also takes place in other RNA molecules, such as primary miRNA (pri-miRNAs).

YTHDF1 (YT521-B homology domain family 1, also known as C20orf21, DACA-1) is a member of the YTH (YT521-B homology) superfamily containing YTH domain. Human YTH domain family proteins include three members, YTHDF1-3, which mainly localized in the cytoplasm. YTHDF proteins comprise a highly conserved single-stranded RNA-binding domain which specifically recognizes and binds m6A-containing RNAs. A important role of YTHDF1 is regulating mRNA translation efficiency. YTHDF1 promotes ribosome loading to m6A-containing mRNAs and interacts with translation initiation factors eIF3 (EIF3A or EIF3B) to facilitate translation initiation.

**Immunogen:** This YTHDF1 antibody was raised against a fusion protein with His-tags at the C-terminus.

**Buffer:** Purified IgG in PBS, 30% glycerol, 0.035% Azide. Sodium Azide is highly toxic.

### Application Notes:

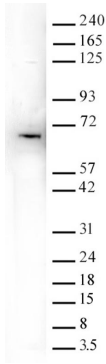
Applications Validated by Active Motif:

WB: 0.5 - 2 µg/mL

IP: 5 µg per IP

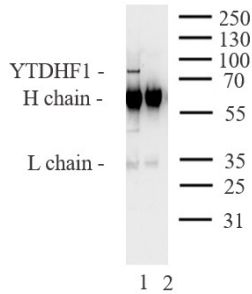
**Storage and Guarantee:** Some products may be shipped at room temperature. This will not affect their stability or performance. Avoid repeated freeze/thaw cycles by aliquoting items into single-use fractions for storage at -20°C for up to 2 years. Keep all reagents on ice when not in storage. This product is guaranteed for 12 months from date of receipt.

This product is for research use only and is not for use in diagnostic procedures.



**YTHDF1 antibody (pAb) tested by Western blot.**

HeLa nuclear extract (20 µg) was probed with YTHDF1 antibody at 0.5 µg/mL.



**YTHDF1 antibody (pAb) tested by Immunoprecipitation.**

5 µg of YTHDF1 antibody was used to immunoprecipitated YTHDF1 from 20 µg of K562 whole cell extract. The immunoprecipitated protein was detected by Western blotting using the YTHDF1 antibody at a dilution of 1 µg/mL. Lane 1: ChIP using 5 ug of 65736 and Lane 2: negative IgG control.