

METTL16 antibody (pAb)

Catalog Nos: 65740, 65940, 65741

RRID: AB_3216307

Application(s): WB

Reactivity: Human

Quantities: 100 µg, 50 µg, 10 µg

Purification: Protein A Chromatography

Host: Rabbit

Isotype: IgG

Molecular Weight: 64.9 kDa

Background: N6-methylated adenine (m6A) is prevalently present in nearly all RNA types and can be found in all organisms from bacteria to humans. It preferentially appears around stop codons and within long internal exons in mammalian messenger RNAs. m6A plays an important role in the efficiency of mRNA splicing, processing, translation efficiency, editing and mRNA stability. m6A also occurs in other RNA molecules, such as primary miRNA (pri-miRNAs).

METTL16 (Methyltransferase-Like Protein 16) is an RNA N6-methyltransferase that methylates adenosine residues of a subset of mRNAs and U6 smaller nuclear RNAs.

METTL16 controls a significant portion of m6A epitranscriptome by regulating SAM homeostasis and plays a role in S-adenosyl-L-methionine homeostasis by regulating the expression of MAT2A transcripts.

Immunogen: This METTL16 antibody was raised against a fusion protein corresponding to human METTL16.

Buffer: PBS containing 30% glycerol and 0.035% sodium azide. Sodium azide is highly toxic.

Application Notes:

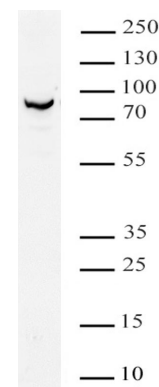
Applications Validated by Active Motif:

WB: 0.5µg/mL-2µg/mL

For optimal results, primary antibody incubations should be performed at room temperature. The addition of 0.05% Tween 20 to all blocking solutions may also reduce background. Individual optimization may be required.

Storage and Guarantee: Some products may be shipped at room temperature. This will not affect their stability or performance. Avoid repeated freeze/thaw cycles by aliquoting items into single-use fractions for storage at -20°C for up to 2 years. Keep all reagents on ice when not in storage. This product is guaranteed for 12 months from date of receipt.

This product is for research use only and is not for use in diagnostic procedures.



METTL16 antibody (pAb) tested by Western blot.

Hela nuclear extract (40 µg per lane) was probed with METTL16 antibody (0.5 µg/mL).