

## Recombinant METTL11A (NTMT1) protein, His-Tag

---

**Catalog No:** 81062, 81762

**Lot No:** 27317001

**Expressed In:** *E. coli*

**Quantity:** 100, 1000 µg

**Concentration:** 1 µg/µl

**Source:** Human

**Buffer Contents:** Recombinant METTL11A / NTMT1, His-tag protein is supplied in 25 mM Tris-HCl pH 8.0, 300 mM NaCl, 10% glycerol and 0.5 mM TCEP.

**Background:** METTL11A (Methyltransferase-Like Protein 11A) / NTMT1 (N-Terminal Xaa-Pro-Lys N-Methyltransferase 1), also known as NRMT1 or NTM1A, is a distributive alpha-N-methyltransferase that methylates the N-terminus of target proteins containing the N-terminal motif [Ala/Gly/Pro/Ser]-Pro-Lys when the initiator Met is cleaved. It specifically catalyzes mono-, di- or tri-methylation of the exposed alpha-amino group of the Ala, Gly or Ser residue in the [Ala/Gly/Ser]-Pro-Lys motif and mono- or di-methylation of Pro in the Pro-Pro-Lys motif. Some of the substrates may be primed by METTL11B-mediated monomethylation. METTL11A catalyzes the trimethylation of the N-terminal Gly in CENPA (after removal of Met- 1). It is also responsible for the N-terminal methylation of KLHL31, MYL2, MYL3, RB1, RCC1, RPL23A and SET. And it is required during mitosis for normal bipolar spindle formation and chromosome segregation via its action on RCC1.

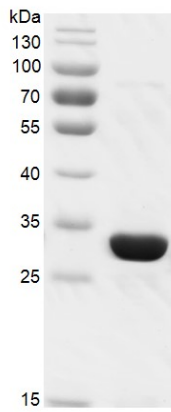
**Protein Details:** Recombinant METTL11A / NTMT1, His-tag protein was expressed in *E. coli* cells as the full length protein (accession number NP\_054783.2) with an N-terminal 6×His tag. The molecular weight of the protein is 28.9 kDa.

**Application Notes:** This protein is suitable for use in binding assays, inhibitor screening, and selectivity profiling.

**N-terminal Methylation Assay:** 3 µM CENP-A peptide (GPRRRSRKPEAPRRR) was incubated with 100 nM METTL11A, His tag protein in reaction buffer including 50 mM Tris-HCl pH 8.6, 0.02% Triton X-100, 2 mM MgCl<sub>2</sub>, 1 mM TCEP, 50 µM SAM for 2 hours at room temperature. Activity was detected by MALDI-TOF.

**Storage and Guarantee:** Recombinant proteins in solution are temperature sensitive and must be stored at -80°C to prevent degradation. Avoid repeated freeze/thaw cycles and keep on ice when not in storage. This product is for research use only and is not for use in diagnostic procedures. This product is guaranteed for 6 months from date of arrival.

### His-METTL11A



### Recombinant METTL11A / NTMT1, His-tag , protein gel

12.5% SDS-PAGE Coomassie staining

MW: 28.9 kDa

Purity: >95%

### MALDI-TOF Assay for METTL11A activity

CENP-A peptide was incubated with METTL11A, His tag protein in reaction for 2 hours at room temperature. Activity was detected by MALDI-TOF.

