

## Recombinant METTL26 protein, His-Tag

**Catalog No:** 81063, 81763**Lot No:** 27317001**Expressed In:** *E. coli***Quantity:** 100, 1000 µg**Concentration:** 1.2 µg/µl**Source:** Human

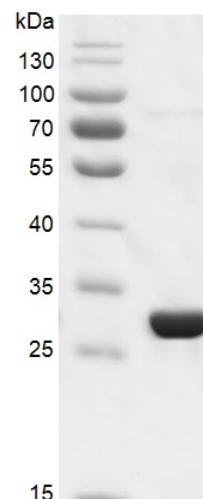
**Buffer Contents:** Recombinant METTL26 protein, His-Tag is supplied at a concentration of 1.2 µg/µl in 25 mM Tris pH 8.0, 300 mM NaCl, 10% glycerol, 0.5 mM TCEP.

**Background:** METTL26 (methyltransferase-like 26) contains a conserved S-adenosylmethionine-binding motif, It is a potential SAM-dependent methyltransferase.

**Protein Details:** Recombinant METTL26 protein, His-Tag was expressed in *E. coli* cells as the full length protein (accession number NP\_115742.3) with an N-terminal His Tag. The molecular weight of METTL26, His-tag is 26.1 kDa.

**Application Notes:** Recombinant METTL26 protein, His-Tag is suitable for use in enzyme kinetics, inhibitor screening, and selectivity profiling.

**Storage and Guarantee:** Recombinant proteins in solution are temperature sensitive and must be stored at -80°C to prevent degradation. Avoid repeated freeze/thaw cycles and keep on ice when not in storage. This product is for research use only and is not for use in diagnostic procedures. This product is guaranteed for 6 months from date of arrival.

**His-METTL26****Recombinant METTL26, His-Tag, protein gel**

12.5% SDS-PAGE gel stained with Coomassie blue.

MW: 26.1 kDa

Purity: ≥ 90%