

## Recombinant METTL21B protein

**Catalog No:** 81207

**Expressed In:** Baculovirus

**Quantity:** 10 µg

**Concentration:** 0.15 µg/µl

**Source:** Human

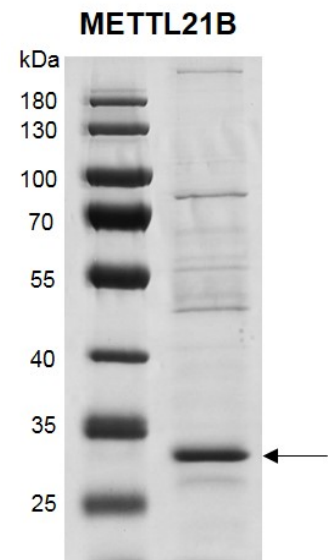
**Buffer Contents:** Recombinant METTL21B protein is supplied in 25 mM HEPES-NaOH pH 7.5, 300 mM NaCl, 10% glycerol, 0.04% Triton X-100, and 0.5 mM TCEP.

**Background:** METTL21B (Methyltransferase-Like Protein 21B), also known as EEF1AKMT3 ((Eukaryotic Translation Elongation Factor 1 Alpha Lysine Methyltransferase 3), is a member of the Family 16 group of methyltransferases. EEF1A is a translation factor which delivers amino-acyl tRNA to the ribosome during translational elongation. In human, EEF1A shows high levels of methylation and has at least six known methylation sites, namely methylation at its N terminus and at lysines 36, 55, 79, 165, and 318. Of these, METTL21B selectively catalyzes the trimethylation of EEF1A at Lys 165. In addition, EEF1AKMT4, METTL13, N6AMT2 (EEF1AKMT1) and METTL10 (EEF1AKMT2) are the methyltransferases for lysines 36, 55, 79 and 318, respectively. EEF1A methylation by EEF1AKMT3 is dynamic as well as inducible by stress conditions, such as ER-stress, and plays a regulatory role on mRNA translation.

**Protein Details:** Recombinant METTL21B protein was expressed in a baculovirus expression system as the full length human protein (accession number NP\_056248.2) with an N-terminal FLAG tag. The molecular weight of the protein is 26 kDa.

**Application Notes:** This product was manufactured as described in Protein Details. Where possible, Active Motif has developed functional or activity assays for recombinant proteins. Additional characterization such as enzyme kinetic activity assays, inhibitor screening or other biological activity assays may not have been performed for every product. All available data this product is shown.

**Storage and Guarantee:** Recombinant proteins in solution are temperature sensitive and must be stored at -80°C to prevent degradation. Avoid repeated freeze/thaw cycles and keep on ice when not in storage. This product is for research use only and is not for use in diagnostic procedures. This product is guaranteed for 6 months from date of arrival.



**Recombinant METTL21B protein gel**  
10% SDS-PAGE gel with Coomassie blue staining  
MW: 26 kDa  
Purity: >77%