

## Recombinant EEF1A1 protein

**Catalog No:** 81219, 81919

**Expressed In:** *E. coli*

**Quantity:** 20, 1000 µg

**Concentration:** 0.25 µg/µl

**Source:** Human

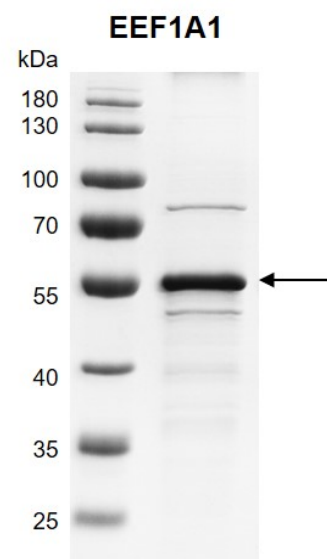
**Buffer Contents:** Recombinant EEF1A1 protein is supplied in 25 mM Tris-HCl pH 7.4, 500 mM NaCl, 10% glycerol, 0.5 mM TCEP.

**Background:** EEF1A1 (Eukaryotic Translation Elongation Factor 1 Alpha 1), also called as LENG7, CTCL Tumor Antigen or CCS3, is an isoform of the alpha subunit of the elongation factor-1 complex, which is responsible for the enzymatic delivery of aminoacyl tRNAs to the ribosome. This isoform (alpha 1) is expressed in brain, placenta, lung, liver, kidney, and pancreas. EEF1A1 is identified as an autoantigen in 66% of patients with Felty syndrome. EEF1A1 can promote the GTP-dependent binding of aminoacyl-tRNA to the A-site of ribosomes during protein biosynthesis. With PARP1 and TXK, it can form a complex that acts as a T helper 1 (Th1) cell-specific transcription factor and binds the promoter of IFN-gamma to directly regulate its transcription, and is thus involved importantly in Th1 cytokine production. It may also mediate accelerated synthesis of free thiol-containing proteins in response to HC-induced oxidative stress by homocysteine (HC).

**Protein Details:** Recombinant EEF1A1 protein was expressed in *E. coli* as the full length protein (accession number NP\_001393.1) with an N-terminal 6×His tag. The molecular weight of the protein is 53.7 kDa.

**Application Notes:** This product was manufactured as described in Protein Details. Where possible, Active Motif has developed functional or activity assays for recombinant proteins. Additional characterization such as enzyme kinetic activity assays, inhibitor screening or other biological activity assays may not have been performed for every product. All available data this product is shown.

**Storage and Guarantee:** Recombinant proteins in solution are temperature sensitive and must be stored at -80°C to prevent degradation. Avoid repeated freeze/thaw cycles and keep on ice when not in storage. This product is for research use only and is not for use in diagnostic procedures. This product is guaranteed for 6 months from date of arrival.



**Recombinant EEF1A1 protein gel**  
10% SDS-PAGE gel  
MW: 53.7 kDa  
Purity: >88%