

Recombinant G6PD protein

Catalog No: 81299, 81999

Expressed In: *E. coli*

Quantity: 50, 1000 µg

Concentration: 0.5 µg/µl

Source: Human

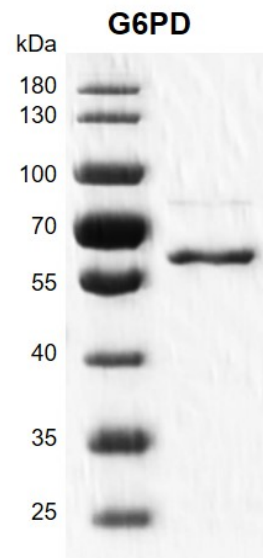
Buffer Contents: Recombinant G6PD protein is supplied in 25 mM Tris-HCl pH 8.0, 300 mM NaCl, 10% glycerol and 0.5 mM TCEP.

Background: G6PD (Glucose-6-Phosphate Dehydrogenase) is a cytosolic enzyme encoded by a housekeeping X-linked gene whose main function is to produce NADPH, a key electron donor in the defense against oxidizing agents and in reductive biosynthetic reactions. G6PD is remarkable for its genetic diversity. Many variants of G6PD, mostly produced from missense mutations, have been described with wide ranging levels of enzyme activity and associated clinical symptoms. G6PD deficiency may cause neonatal jaundice, acute hemolysis, or severe chronic non-spherocytic hemolytic anemia.

Protein Details: Full length human G6PD protein was expressed in *E. coli* cells (accession number NP_001035810.1) with a C-terminal 6×His-Tag. The molecular weight of the protein is 60.3 kDa.

Application Notes: This product was manufactured as described in Protein Details. Where possible, Active Motif has developed functional or activity assays for recombinant proteins. Additional characterization such as enzyme kinetic activity assays, inhibitor screening or other biological activity assays may not have been performed for every product. All available data for a given product is shown on the lot-specific Technical Data Sheet.

Storage and Guarantee: Recombinant proteins in solution are temperature sensitive and must be stored at -80°C to prevent degradation. Avoid repeated freeze/thaw cycles and keep on ice when not in storage. This product is guaranteed for 6 months from date of arrival.



Recombinant G6PD protein gel
10% SDS-PAGE with Coomassie blue staining

MW:60.3 kDa

Purity: >90%