

## Recombinant UBE2I protein

**Catalog No:** 81489, 81589

**Expressed In:** *E. coli*

**Quantity:** 100, 1000 µg

**Source:** Human

**Buffer Contents:** Recombinant UBE2I protein is supplied in 25 mM Tris 8.0, 300mM NaCl, 20% glycerol, 0.5 mM TCEP.

**Background: UBE2I (SUMO-conjugating enzyme UBC9)** also known as C358B7.1, P18, UBC9. **UBE2I** is a member of the E2 ubiquitin-conjugating enzyme family which is required for post-replicative DNA damage repair and plays an important role in various cellular processes. **UBE2I** can accept the ubiquitin-like proteins SUMO1, SUMO2, SUMO3, SUMO4 and SUMO1P1/SUMO5 from the UBLE1A-UBLE1B E1 complex and catalyzes their covalent attachment to other proteins with the help of an E3 ligase such as RANBP2, CBX4 and ZNF451. Can catalyze the formation of poly-SUMO chains. Necessary for sumoylation of FOXL2 and KAT5. Essential for nuclear architecture and chromosome segregation.

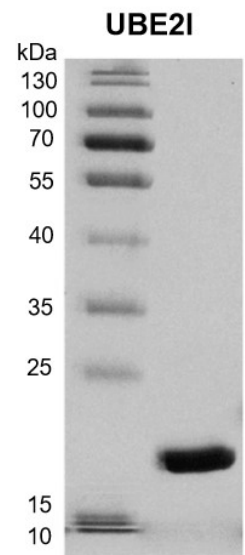
Sumoylates p53/TP53 at 'Lys-386'. Mediates sumoylation of ERCC6 which is essential for its transcription-coupled nucleotide excision repair activity.

**Protein Details:** Recombinant UBE2I protein that includes full length of human UBE2I protein (accession number NP\_003336.1) was expressed in *E. coli* and contains an N-terminal His tag with a molecular weight of 20.17 kDa. The purity of the protein is ≥ 95% by SDS-PAGE.

**Application Notes:** This product was manufactured as described in Protein Details. Where possible, Active Motif has developed functional or activity assays for recombinant proteins. Additional characterization such as enzyme kinetic activity assays, inhibitor screening or other biological activity assays may not have been performed for every product. All available data this product is shown.

**Storage and Guarantee:** Recombinant proteins in solution are temperature sensitive and must be stored at -80°C to prevent degradation. Avoid repeated freeze/thaw cycles and keep on ice when not in storage. This product is guaranteed for 6 months from date of receipt.

This product is for research use only and is not for use in diagnostic procedures.



**Recombinant UBE2I protein**

12.5% SDS-PAGE Coomassie staining  
MW: 20.17 kDa

Purity: ≥ 95%