

AbFlex® EZH2 antibody (rAb)

Catalog Nos: 91159, 91160

RRID: AB_3216319

Application(s): IP

Reactivity: Human

Quantities: 100 µg, 10 µg

Purification: Protein A Chromatography

Host: Mouse

Isotype: IgG2a

Background: AbFlex® antibodies are recombinant antibodies (rAbs) that have been generated using defined DNA sequences to produce highly specific, reproducible antibodies. Each AbFlex antibody contains a 6xHis Tag, a Biotinylation Tag for enzymatic biotin conjugation using the biotin ligase, BirA, and a sortase recognition motif (LPXTG) to attach a variety of labels directly to the antibody including fluorophores, enzymatic substrates (HRP, AP), peptides, drugs as well as solid supports. AbFlex® EZH2 antibody was expressed as full-length IgG with mouse immunoglobulin heavy and light chains (IgG2a isotype) in mammalian 293 cells.

EZH2 – (Enhancer of Zeste homolog 2, also designated Enx1 and SETDB1) is a human homolog of the Drosophila Enhancer of Zeste protein. It contains a SET domain that catalyzes the mono-, di- and trimethylation of Histone H3 Lys27. EZH2, EED and Suz12 are present in the PRC protein complexes that function as mediators of epigenetic transcriptional silencing. Polycomb group proteins repress gene expression by binding to chromatin and locally altering chromatin structure. Deregulation of EZH2 is linked to a variety of cancers.

Immunogen: This antibody was raised against a recombinant protein corresponding to amino acids 353-451 of human EZH2.

Buffer: Purified IgG in 140 mM Hepes, pH 7.5, 70 mM NaCl, 32 mM NaOAc, 0.035% sodium azide, 30% glycerol. Sodium azide is highly toxic.

Application Notes:

Applications Validated by Active Motif:

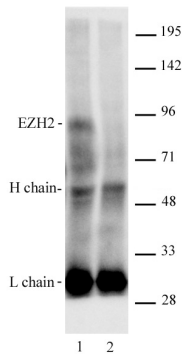
IP: 4 µg/ml per IP dilution

CUT&RUN: 1 µl per 50 µl reaction

Note: many chromatin-bound proteins are not soluble in a low salt nuclear extract and fractionate to the pellet. Therefore, we recommend a High Salt / Sonication Protocol when preparing nuclear extracts. In addition, we recommend adding 500 mM NaCl to the IP wash buffer for best performance.

Storage and Guarantee: Some products may be shipped at room temperature. This will not affect their stability or performance. Avoid repeated freeze/thaw cycles by aliquoting items into single-use fractions for storage at -20°C for up to 2 years. Keep all reagents on ice when not in storage. This product is guaranteed for 12 months from date of receipt.

This product is for research use only and is not for use in diagnostic procedures.



AbFlex® EZH2 antibody (rAb) tested by Immunoprecipitation.

HeLa cell nuclear extract* was immunoprecipitated with 4 µg of AbFlex EZH2 antibody (lane 1) or control IgG2a (lane 2). Immunoprecipitates were run on SDS-PAGE and analyzed by Western blot using EZH2 polyclonal antibody (Cat. No. 39999) at 2 µg/ml, followed by incubation with Anti-Rabbit light chain secondary antibody.

AbFlex® EZH2 antibody (rAb) tested by CUT&RUN

CUT&RUN was performed using 500,000 K562 nuclei and sequenced using 38 base-pair, paired-end reads on the Illumina NovaSeq. Data was collected from 148 million reads, and EZH2 data is shown for Chromosome 12.

