

## AbFlex<sup>®</sup> MAZ antibody (rAb)

**Catalog Nos:** 91205, 91206

**RRID:** AB\_2793803

**Isotype:** IgG2a

**Application(s):** WB

**Reactivity:** Human

**Quantities:** 100 µg, 10 µg

**Purification:** Protein A Chromatography

**Host:** Mouse

**Concentration:** 1 µg/µl

**Molecular Weight:** 55 kDa

**Background:** AbFlex<sup>®</sup> antibodies are recombinant antibodies (rAbs) that have been generated using defined DNA sequences to produce highly specific, reproducible antibodies. Each AbFlex antibody contains a 6xHis Tag, a Biotinylation Tag for enzymatic biotin conjugation using the biotin ligase, BirA, and a sortase recognition motif (LPXTG) to attach a variety of labels directly to the antibody including fluorophores, enzymatic substrates (HRP, AP), peptides, drugs as well as solid supports. MAZ (Myc-associated zinc finger protein) functions as a transcription factor roles in both transcription initiation and termination. MAZ binds to two sites within the c-Myc promoter, ME1a1 and ME1a2. It also binds to multiple G/C-rich sites within the promoter of the Sp1 family of transcription factors. MAZ also participates in skeletal muscle development through the activation of several skeletal muscle-specific genes. MAZ has also been reported to drive tumor-specific expression of PPAR-gamma in breast cancer cells.

**Immunogen:** This antibody was raised against human Maz protein [MYC-associated zinc finger protein], NP\_002374.

**Buffer:** Purified IgG in 140 mM Hepes, pH 7.5, 70 mM NaCl, 32 mM NaOAc, 0.035% sodium azide, 30% glycerol. Sodium azide is highly toxic.

### Application Notes:

Applications Validated by Active Motif:

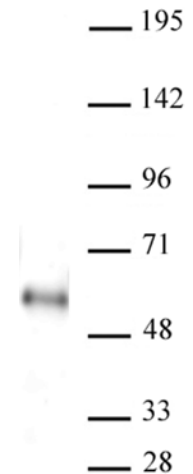
WB\*: 1 - 4 µg/ml dilution

For optimal results, primary antibody incubations should be performed at room temperature. The addition of 0.1% Tween 20 to all blocking solutions may also reduce background. Individual optimization may be required.

\*Note: many chromatin-bound proteins are not soluble in a low salt nuclear extract and fractionate to the pellet. Therefore, we recommend a High Salt / Sonication Protocol when preparing nuclear extracts for Western blot.

AbFlex<sup>®</sup> recombinant antibodies are genetically derived from DNA sequences of parental hybridoma clones. For details on the parental clone, see Catalog No. 39935.

**Storage and Guarantee:** Some products may be shipped at room temperature. This will not affect their stability or performance. Avoid repeated freeze/thaw cycles by aliquoting items into single-use fractions for storage at -20°C for up to 2 years. Keep all reagents on ice when not in storage. This product is guaranteed for 12 months from date of receipt



AbFlex<sup>®</sup> MAZ antibody (rAb) tested by Western Blot.  
10 µg MCF7 cell nuclear extract was run on SDS-PAGE, and probed with 2 µg/ml AbFlex MAZ antibody. MW: 55 kDa