

AbFlex® PBX2 antibody (rAb)

Catalog Nos: 91227, 91228

RRID: AB_2793811

Isotype: IgG2a

Application(s): WB

Reactivity: Human, Mouse

Quantities: 100 µg, 10 µg

Purification: Protein A Chromatography

Host: Mouse

Concentration: 1 µg/µl

Molecular Weight: 51 kDa

Background: AbFlex® antibodies are recombinant antibodies (rAbs) that have been generated using defined DNA sequences to produce highly specific, reproducible antibodies. Each AbFlex antibody contains a 6xHis Tag, a Biotinylation Tag for enzymatic biotin conjugation using the biotin ligase, BirA, and a sortase recognition motif (LPXTG) to attach a variety of labels directly to the antibody including fluorophores, enzymatic substrates (HRP, AP), peptides, drugs as well as solid supports. AbFlex® PBX2 antibody was expressed as full-length IgG with mouse immunoglobulin heavy and light chains (IgG2a isotype) in mammalian 293 cells.

PBX proteins are a family of TALE-class transcription factors that associate with a subset of Hox proteins, enhancing their DNA binding affinities and specificities.

PBX proteins also heterodimerize with the Meis/Prep subfamily of to form trimeric complexes with Hox proteins at specific DNA sites.

Immunogen: This antibody was raised against a recombinant protein corresponding to amino acids 308-430 of mouse PBX2 (pre-B-cell leukemia homeobox 2).

Buffer: Purified IgG in 140 mM Hepes, pH 7.5, 70 mM NaCl, 32 mM NaOAc, 0.035% sodium azide, 30% glycerol. Sodium azide is highly toxic.

Application Notes:

Applications Validated by Active Motif:

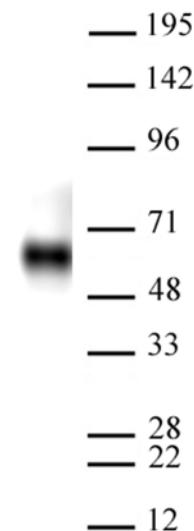
WB*: 0.25 - 2 µg/ml

*Note: many chromatin-bound proteins are not soluble in a low salt nuclear extract and fractionate to the pellet. Therefore, we recommend a High Salt / Sonication Protocol when preparing nuclear extracts for Western Blot.

AbFlex® recombinant antibodies are genetically derived from DNA sequences of parental hybridoma clones. For details on the parental clone, see Catalog No. 61155.

Storage and Guarantee: Some products may be shipped at room temperature. This will not affect their stability or performance. Avoid repeated freeze/thaw cycles by aliquoting items into single-use fractions for storage at -20°C for up to 2 years. Keep all reagents on ice when not in storage. This product is guaranteed for 12 months from date of receipt.

This product is for research use only and is not for use in diagnostic procedures.



AbFlex® PBX2 antibody (rAb) tested by Western blot.

20 µg of HEK293 cell nuclear extract was run on SDS-PAGE and probed with AbFlex PBX2 antibody at 1 µg/ml.