

AbFlex® Pim2 antibody (rAb)

Catalog Nos: 91239, 91240**RRID:** AB_2793814**Isotype:** IgG2a**Application(s):** WB**Reactivity:** Human**Quantities:** 100 µg, 10 µg**Purification:** Protein A Chromatography**Host:** Mouse**Concentration:** 1 µg/µl**Molecular Weight:** 37 kDa

Background: AbFlex® antibodies are recombinant antibodies (rAbs) that have been generated using defined DNA sequences to produce highly specific, reproducible antibodies. Each AbFlex antibody contains a 6xHis Tag, a Biotinylation Tag for enzymatic biotin conjugation using the biotin ligase, BirA, and a sortase recognition motif (LPXTG) to attach a variety of labels directly to the antibody including fluorophores, enzymatic substrates (HRP, AP), peptides, drugs as well as solid supports. AbFlex® Pim2 antibody was expressed as full-length IgG with mouse immunoglobulin heavy and light chains (IgG2a isotype) in mammalian 293 cells. The antibody recognizes all three isoforms of human Pim2.

PIM2 is a serine/threonine protein kinase in the CAMK family. **PIM2** promotes cell survival in response to a variety of proliferative signals through activation of the I-κB kinase/NF-κB pathway. It also inhibits apoptosis through the phosphorylation of BAD. **PIM2** has been implicated in the transformation of both T and B lymphocytes and is highly expressed in human leukemia and lymphomas, as well as adenocarcinomas and hepatocellular carcinomas.

Immunogen: This antibody was raised against a recombinant protein corresponding to human PIM2 (pim-2 oncogene).

Buffer: Purified IgG in 140 mM Hepes, pH 7.5, 70 mM NaCl, 32 mM NaOAc, 0.035% sodium azide, 30% glycerol. Sodium azide is highly toxic.

Application Notes:

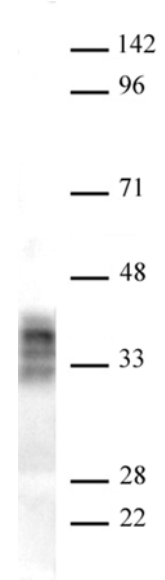
Applications Validated by Active Motif:

WB: 0.5 - 2 µg/ml

Note: For optimal results, we recommend the addition of 0.1% Tween to all blocking solutions to reduce background. Individual optimization may be required.

AbFlex® recombinant antibodies are genetically derived from DNA sequences of parental hybridoma clones. For details on the parental clone, see Catalog No. 61159.

Storage and Guarantee: Some products may be shipped at room temperature. This will not affect their stability or performance. Avoid repeated freeze/thaw cycles by aliquoting items into single-use fractions for storage at -20°C for up to 2 years. Keep all reagents on ice when not in storage. This product is guaranteed for 12 months from date of receipt.



AbFlex® Pim2 antibody (rAb) tested by Western blot.

20 µg of K562 cytoplasmic extract was run on SDS-PAGE and probed with AbFlex Pim2 antibody at 0.5 µg/ml. This antibody recognizes all three isoforms of human Pim2.