

## AbFlex® Snail antibody (rAb)

**Catalog Nos:** 91255, 91256**RRID:** AB\_2793821**Isotype:** IgG2a**Application(s):** WB**Reactivity:** Human**Quantities:** 100 µg, 10 µg**Purification:** Protein A Chromatography**Host:** Mouse**Concentration:** 1 µg/µl**Molecular Weight:** 32 kDa

**Background:** AbFlex® antibodies are recombinant antibodies (rAbs) that have been generated using defined DNA sequences to produce highly specific, reproducible antibodies. Each AbFlex antibody contains a 6xHis Tag, a Biotinylation Tag for enzymatic biotin conjugation using the biotin ligase, BirA, and a sortase recognition motif (LPXTG) to attach a variety of labels directly to the antibody including fluorophores, enzymatic substrates (HRP, AP), peptides, drugs as well as solid supports. AbFlex® Snail antibody was expressed as full-length IgG with mouse immunoglobulin heavy and light chains (IgG2a isotype) in mammalian 293 cells.

**Snail** (snail homolog 1 (Drosophila)) is involved in the epithelial to mesenchymal transition (EMT) and formation and maintenance of embryonic mesoderm (By similarity). Binds to 3 E-boxes of the E-cadherin gene promoter and represses its transcription.

**Immunogen:** This antibody was raised against full length recombinant human SNAI1 protein (snail homolog 1 (Drosophila))

**Buffer:** Purified IgG in 140 mM Hepes, pH 7.5, 70 mM NaCl, 32 mM NaOAc, 0.035% sodium azide, 30% glycerol. Sodium azide is highly toxic.

**Application Notes:**

Applications Validated by Active Motif:

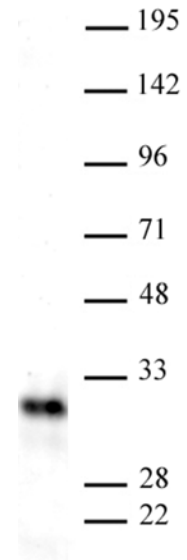
WB\*: 0.5 - 2 µg/ml dilution

For optimal results, we recommend the addition of 0.1% Tween 20 to all blocking solutions to reduce background. Individual optimization may be required.

\*Note: many chromatin-bound proteins are not soluble in a low salt nuclear extract and fractionate to the pellet. Therefore, we recommend a High Salt / Sonication Protocol when preparing nuclear extracts for Western blot.

AbFlex® recombinant antibodies are genetically derived from DNA sequences of parental hybridoma clones. For details on the parental clone, see Catalog No. 61367.

**Storage and Guarantee:** Some products may be shipped at room temperature. This will not affect their stability or performance. Avoid repeated freeze/thaw cycles by aliquoting items into single-use fractions for storage at -20°C for up to 2 years. Keep all reagents on ice when not in storage. This product is guaranteed for 12 months from date of receipt



AbFlex® Snail antibody (rAb) tested by Western blot.

20 µg of K562 cell nuclear extract was run on SDS-PAGE and probed with AbFlex Snail antibody at 0.5 µg/ml.