

## AbFlex® Ubiquitin antibody (rAb)

---

**Catalog Nos:** 91257, 91258

**RRID:** AB\_2793822

**Isotype:** IgG2a

**Application(s):** WB

**Reactivity:** Human, Wide Range Predicted

**Quantities:** 100 µg, 10 µg

**Purification:** Protein A Chromatography

**Host:** Mouse

**Concentration:** 1 µg/µl

**Molecular Weight:** Not Applicable

---

**Background:** AbFlex® antibodies are recombinant antibodies (rAbs) that have been generated using defined DNA sequences to produce highly specific, reproducible antibodies. Each AbFlex antibody contains a 6xHis Tag, a Biotinylation Tag for enzymatic biotin conjugation using the biotin ligase, BirA, and a sortase recognition motif (LPXTG) to attach a variety of labels directly to the antibody including fluorophores, enzymatic substrates (HRP, AP), peptides, drugs as well as solid supports. AbFlex® Ubiquitin antibody was expressed as full-length IgG with mouse immunoglobulin heavy and light chains (IgG2a isotype) in mammalian 293 cells.

**Ubiquitin** is an important signaling protein that is catalytically added to proteins on lysine residues to modify their function. Addition of multiple ubiquitin proteins in a string (poly-ubiquitylation) to proteins signals their destruction by the proteasome. Mono-ubiquitylation of proteins has a much different effect, more in keeping with post-translational modification of proteins by phosphorylation or acetylation. Mono-ubiquitylation is part of a number of signal transduction pathways, including those involving histone proteins and transcriptional regulation.

**Immunogen:** This antibody was raised against bovine ubiquitin.

**Buffer:** Purified IgG in 140 mM Hepes, pH 7.5, 70 mM NaCl, 32 mM NaOAc, 0.035% sodium azide, 30% glycerol. Sodium azide is highly toxic.

**Application Notes:**

Applications Validated by Active Motif:

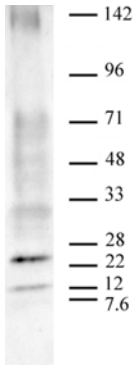
WB: 0.5 - 2 µg/ml

DB: 2 µg/ml

AbFlex® recombinant antibodies are genetically derived from DNA sequences of parental hybridoma clones. For details on the parental clone, see Catalog No. 39741.

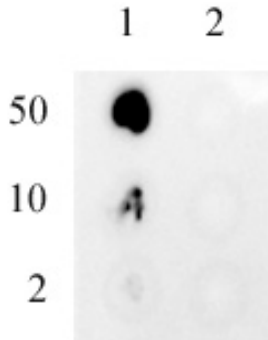
**Storage and Guarantee:** Some products may be shipped at room temperature. This will not affect their stability or performance. Avoid repeated freeze/thaw cycles by aliquoting items into single-use fractions for storage at -20°C for up to 2 years. Keep all reagents on ice when not in storage. This product is guaranteed for 12 months from date of receipt.

This product is for research use only and is not for use in diagnostic procedures.



AbFlex<sup>®</sup> Ubiquitin antibody (rAb) tested by Western blot.

20 µg of HeLa cell nuclear acid-extract was run on SDS-PAGE and probed with AbFlex Ubiquitin antibody at 0.5 µg/ml. Antibodies to Ubiquitin will detect proteins of various sizes that are modified by the addition of Ubiquitin.



AbFlex<sup>®</sup> Ubiquitin antibody specificity

Dot blot analysis was used to confirm the specificity of Ubiquitin antibody. 50 ng, 10 ng, and 2 ng of either recombinant Ubiquitin (Lane 1) or BSA (Lane 2) were spotted onto nylon membrane and probed with AbFlex Ubiquitin recombinant antibody at 2 µg/ml.