

## AbFlex<sup>®</sup> CHD3 antibody (rAb)

**Catalog Nos:** 91273, 91274

**RRID:** AB\_2793829

**Isotype:** IgG2a

**Application(s):** IP, WB

**Reactivity:** Drosophila

**Quantities:** 100 µg, 10 µg

**Purification:** Protein A Chromatography

**Host:** Mouse

**Concentration:** 1 µg/µl

**Molecular Weight:** 103 kDa

**Background:** AbFlex<sup>®</sup> antibodies are recombinant antibodies (rAbs) that have been generated using defined DNA sequences to produce highly specific, reproducible antibodies. Each AbFlex antibody contains a 6xHis Tag, a Biotinylation Tag for enzymatic biotin conjugation using the biotin ligase, BirA, and a sortase recognition motif (LPXTG) to attach a variety of labels directly to the antibody including fluorophores, enzymatic substrates (HRP, AP), peptides, drugs as well as solid supports. AbFlex<sup>®</sup> CHD3 antibody was expressed as full-length IgG with mouse immunoglobulin heavy and light chains (IgG2a isotype) in mammalian 293 cells.

**CHD3** (chromodomain helicase DNA binding protein 3) is a component of the CHD family of ATP-dependent chromatin remodelers and forms histone deacetylase NuRD complexes which participate in the remodeling of chromatin by deacetylating histones.

**Immunogen:** This antibody was raised against a synthetic peptide corresponding to amino acid residues 865-885 of *Drosophila*.

**Buffer:** Purified IgG in 140 mM Hepes, pH 7.5, 70 mM NaCl, 32 mM NaOAc, 0.035% sodium azide, 30% glycerol. Sodium azide is highly toxic.

### Application Notes:

Applications Validated by Active Motif:

IP: 4 µg per IP

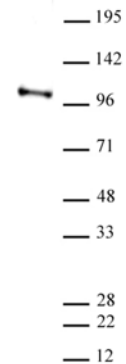
WB: 0.5 - 2 µg/ml

For optimal results, we recommend the addition of 0.05% Tween 20 to all blocking solutions to reduce background. Individual optimization may be required.

AbFlex<sup>®</sup> recombinant antibodies are genetically derived from DNA sequences of parental hybridoma clones. For details on the parental clone, see Catalog No. 61469.

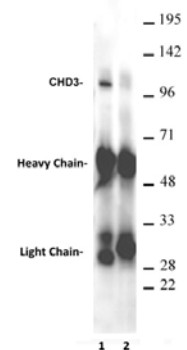
**Storage and Guarantee:** Some products may be shipped at room temperature. This will not affect their stability or performance. Avoid repeated freeze/thaw cycles by aliquoting items into single-use fractions for storage at -20°C for up to 2 years. Keep all reagents on ice when not in storage. This product is guaranteed for 12 months from date of receipt.

This product is for research use only and is not for use in diagnostic procedures.



AbFlex<sup>®</sup> CHD3 antibody (rAb) tested by Western blot.

15 µg of *Drosophila* Schneider Cell nuclear extract was run on SDS-PAGE and probed with AbFlex CHD3 antibody at 0.5 µg/ml.



**AbFlex CHD3 antibody (rAb) tested antibody tested by immunoprecipitation.**

*Drosophila* Schneider cell nuclear extract was immunoprecipitated using 4 µg of AbFlex CHD3 antibody (Lane 1) or an unrelated AbFlex antibody (Lane 2). Protein from IP was probed by Western blot using AbFlex CHD3 antibody (2 µg/ml).