

AbFlex® Bcl6 antibody (rAb)

Catalog Nos: 91287, 91288**RRID:** AB_2793833**Isotype:** IgG2a**Application(s):** WB**Reactivity:** Human**Quantities:** 100 µg, 10 µg**Purification:** Protein A Chromatography**Host:** Mouse**Concentration:** 1 µg/µl**Molecular Weight:** 80 kDa

Background: AbFlex® antibodies are recombinant antibodies (rAbs) that have been generated using defined DNA sequences to produce highly specific, reproducible antibodies. Each AbFlex antibody contains a 6xHis Tag, a Biotinylation Tag for enzymatic biotin conjugation using the biotin ligase, BirA, and a sortase recognition motif (LPXTG) to attach a variety of labels directly to the antibody including fluorophores, enzymatic substrates (HRP, AP), peptides, drugs as well as solid supports. AbFlex® Bcl6 antibody was expressed as full-length IgG with mouse immunoglobulin heavy and light chains (IgG2a isotype) in mammalian 293 cells.

Bcl6 (B-cell lymphoma 6 protein, Bcl5, LAZ3, ZBTB27, ZNF51) is sequence-specific transcriptional repressor that is required for the formation of lymph node germinal centers (GC). Bcl6 is a member of the BTB-POZ family of transcriptional regulators and contains six Kruppel-type zinc fingers. The POZ domain in the amino terminus of Bcl6 is involved in the recruitment of corepressor proteins including NCoR, BCoR, SMRT, Mi-2/NURD and several HDACs. Bcl6 promotes proliferative expansion of B-cells in the germinal center through repression of genes regulating cell cycle and differentiation. Bcl6 also suppresses the DNA damage response, to prevent class-switch recombination being repaired. Unregulated expression of Bcl6 is involved in the development of many B-cell lymphomas.

Immunogen: This antibody was raised against full length human Bcl6 (B-cell lymphoma 6 protein) by genetic immunization. (Garcia *et al.*, 2006. Genetic Immunization: A New Monoclonal Antibody for the Detection of BCL-6 Protein in Paraffin Sections. *J. Histochemistry & Cytochemistry*, vol. 54(1): 31-38).

Buffer: 140 mM Hepes, pH 7.5, 70 mM NaCl, 32 mM NaOAc, 0.035% sodium azide, and 30% glycerol. Sodium azide is highly toxic.

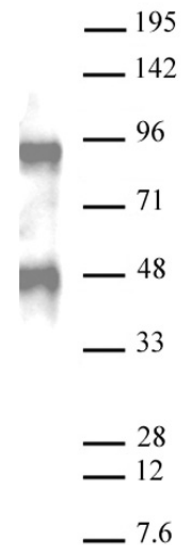
Application Notes:

Applications Validated by Active Motif:

WB: 0.5 – 2 µg/ml

AbFlex® recombinant antibodies are genetically derived from DNA sequences of parental hybridoma clones. For details on the parental clone, see Catalog No. 61193.

Storage and Guarantee: Some products may be shipped at room temperature. This will not affect their stability or performance. Avoid repeated freeze/thaw cycles by aliquoting items into single-use fractions for storage at -20°C for up to 2 years. Keep all reagents on ice when not in storage. This product is guaranteed for 12



AbFlex® Bcl6 antibody (rAb) tested by Western blot.

20 µg of U87 cell nuclear extract was run on SDS-PAGE and probed with AbFlex Histone Bcl6 antibody at 0.5 µg/ml.