

AbFlex® Histone H2A antibody (rAb)

Catalog Nos: 91325, 91326

RRID: AB_3216342

Application(s): WB

Reactivity: Human, Wide Range Predicted

Quantities: 100 µg, 10 µg

Purification: Protein A Chromatography

Host: Mouse

Isotype: IgG2a

Molecular Weight: 17 kDa

Background: AbFlex® antibodies are recombinant antibodies (rAbs) that have been generated using defined DNA sequences to produce highly specific, reproducible antibodies. Each AbFlex antibody contains a 6xHis Tag, a Biotinylation Tag for enzymatic biotin conjugation using the biotin ligase, BirA, and a sortase recognition motif (LPXTG) to attach a variety of labels directly to the antibody including fluorophores, enzymatic substrates (HRP, AP), peptides, drugs as well as solid supports. AbFlex® Histone H2A antibody was expressed in was expressed as full-length IgG with mouse immunoglobulin heavy and light chains (IgG2a isotype) CHO cells.

Immunogen: This antibody was raised against recombinant human Histone H2A.

Buffer: 140 mM Hepes, pH 7.5, 70 mM NaCl, 32 mM NaOAc, 0.035% sodium azide, and 30% glycerol. Sodium azide is highly toxic.

Application Notes:

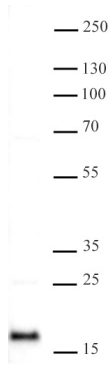
Applications Validated by Active Motif:

WB*: 0.5 – 2 µg/ml

*Note: many chromatin-bound proteins are not soluble in a low salt nuclear extract and fractionate to the pellet. Therefore, we recommend a High Salt / Sonication Protocol when preparing nuclear extracts for Western blot.

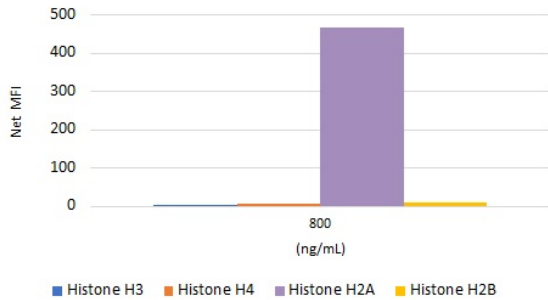
Storage and Guarantee: Some products may be shipped at room temperature. This will not affect their stability or performance. Avoid repeated freeze/thaw cycles by aliquoting items into single-use fractions for storage at -20°C for up to 2 years. Keep all reagents on ice when not in storage. This product is guaranteed for 12 months from date of receipt.

This product is for research use only and is not for use in diagnostic procedures.



AbFlex® Histone H2A antibody tested by Western blot.

20 µg of HeLa nuclear extract* was run on SDS-PAGE and probed with antibody at 0.5 µg/ml.



AbFlex® Histone H2A antibody specificity

AbFlex Histone H2A antibody (rAb) tested by Luminex bead-based specificity analysis. Luminex bead-based specificity analysis was used to confirm the specificity of AbFlex Histone H2A antibody (rAb) for Histone H2A. Various Histone proteins were conjugated to MagPlex Luminex beads and incubated with various amounts of AbFlex Histone H2A antibody (rAb). Protein-bound antibody was detected with anti-mouse IgG-Phycoerythrin and read in a Luminex instrument.

Luminex® is a registered trademark of Luminex Corporation.