

AbFlex® Supt5H/SPT5 antibody (rAb)

Catalog Nos: 91331, 91332

RRID: AB_3216347

Application(s): IP, WB

Reactivity: Human

Quantities: 100 µg, 10 µg

Purification: Protein A Chromatography

Host: Mouse

Isotype: IgG2a

Molecular Weight: 140 kDa

Background: AbFlex® antibodies are recombinant antibodies (rAbs) that have been generated using defined DNA sequences to produce highly specific, reproducible antibodies. Each AbFlex antibody contains a 6xHis Tag, a Biotinylation Tag for enzymatic biotin conjugation using the biotin ligase, BirA, and a sortase recognition motif (LPXTG) to attach a variety of labels directly to the antibody including fluorophores, enzymatic substrates (HRP, AP), peptides, drugs as well as solid supports. AbFlex® Supt5H / SPT5 was expressed as full-length IgG with mouse immunoglobulin heavy and light chains (IgG2a isotype) in CHO cells.

SUPT5H (SPT5 Homolog, DSIF Elongation Factor Subunit) is a transcription elongation factor which regulates mRNA processing and transcription elongation by RNA polymerase II. SUPT5H positively regulates mRNA capping by stimulating the mRNA guanylyltransferase activity of RNGTT/CAP1A. SUPT5H also acts cooperatively with the negative elongation factor complex (NELF complex) to enhance transcriptional pausing at sites proximal to the promoter. Diseases associated with SUPT5H include HIV-1. Among its related pathways are mRNA capping and HIV life cycle.

Immunogen: This antibody was raised against a synthetic peptide derived from the human SPT5 C-terminal region.

Buffer: 140 mM Hepes, pH 7.5, 70 mM NaCl, 32 mM NaOAc, 0.035% sodium azide, and 30% glycerol. Sodium azide is highly toxic.

Application Notes:

Applications Validated by Active Motif:

WB: 0.5 - 2 µg/ml

IP: 4 µg per IP

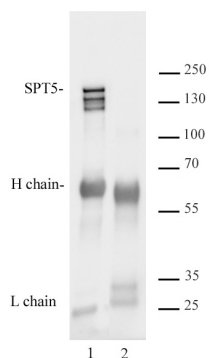
AbFlex® recombinant antibodies are genetically derived from DNA sequences of parental hybridoma clones. For details on the parental clone, see Catalog No. 65689.

Storage and Guarantee: Some products may be shipped at room temperature. This will not affect their stability or performance. Avoid repeated freeze/thaw cycles by aliquoting items into single-use fractions for storage at -20°C for up to 2 years. Keep all reagents on ice when not in storage. This product is guaranteed for 12 months from date of receipt. This product is for research use only and is not for use in diagnostic procedures.



AbFlex® Supt5H/SPT5 antibody tested by Western blot.

20 µg of HeLa whole cell extract was run on SDS-PAGE and probed with AbFlex Supt5H/SPT5 antibody at 2 µg/ml.



AbFlex® Supt5H/SPT5 antibody tested by Immunoprecipitation.

4 µg of antibody was used to immunoprecipitate Supt5H/SPT5 from 500 µg of HeLa whole cell extract, which was then run on SDS-PAGE and probed with the same antibody at 2 µg/ml. Tween-20 at 0.05% was added to blocking buffers to perform Western blot and reduce background.