

AbFlex[®] HP1α antibody (rAb)

Catalog Nos: 91405, 91406

Application(s): WB

Reactivity: Human, Mouse

Quantities: 100 µg, 10 µg

Purification: Protein A Chromatography

Host: Mouse

Isotype: IgG2a

Molecular Weight: 28 kDa

Background: AbFlex[®] antibodies are recombinant antibodies (rAbs) that have been generated using defined DNA sequences to produce highly specific, reproducible antibodies. Each AbFlex antibody contains a 6xHis Tag, a Biotinylation Tag for enzymatic biotin conjugation using the biotin ligase, BirA, and a sortase recognition motif (LPXTG) to attach a variety of labels directly to the antibody including fluorophores, enzymatic substrates (HRP, AP), peptides, drugs as well as solid supports.

AbFlex[®] HP1α antibody was expressed as full-length IgG with mouse immunoglobulin heavy and light chains (IgG2a isotype) in mammalian 293 cells.

HP1 (Heterochromatin protein 1) is a chromosomal protein that participates in both chromatin packaging and gene silencing. Three HP1 isoforms (α, β and γ) occur in mammals. The chromodomain (Chromatin Organization Modifier) of HP1α is responsible for binding to Histone H3 methyl Lys9, although additional factors are required to specify the HP1 targeting. The chromoshadow domain mediates interactions with a number of nuclear proteins, including SuvH39 (a Histone H3 Lysine methyltransferase), the DNA methyltransferases DNMT1 and DNMT3A or the large subunit of the chromatin assembly factor-1 (CAF-1). Dysfunction of HP1α plays a critical role in tumorigenesis, and is implicated in the invasive/metastatic phenotype of breast cancer.

Immunogen: This HP1 alpha antibody was raised against a recombinant protein corresponding to full-length recombinant mouse HP1 alpha.

Buffer: Purified IgG2a in 140 mM Hepes, pH 7.5, 70 mM NaCl, 32 mM NaOAc, 0.035% sodium azide, 30% glycerol. Sodium azide is highly toxic.

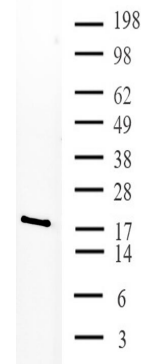
Application Notes:

Applications Validated by Active Motif:

WB: 0.5 - 2 µg/mL

Storage and Guarantee: Some products may be shipped at room temperature. This will not affect their stability or performance. Avoid repeated freeze/thaw cycles by aliquoting items into single-use fractions for storage at -20°C for up to 2 years. Keep all reagents on ice when not in storage. This product is guaranteed for 12 months from date of receipt.

This product is for research use only and is not for use in diagnostic procedures.



AbFlex[®] HP1α antibody (rAb) tested by Western blot.

HeLa whole cell extract (20 µg) was probed with AbFlex[®] HP1α antibody at 2 µg/mL.