

AbFlex® HP1γ antibody (rAb)

Catalog Nos: 91409, 91410

RRID: AB_3216316

Application(s): WB

Reactivity: Human, Mouse

Quantities: 100 µg, 10 µg

Purification: Protein A Chromatography

Host: Mouse

Isotype: IgG2a

Molecular Weight: 25 kDa

Background: AbFlex® antibodies are recombinant antibodies (rAbs) that have been generated using defined DNA sequences to produce highly specific, reproducible antibodies. Each AbFlex antibody contains a 6xHis Tag, a Biotinylation Tag for enzymatic biotin conjugation using the biotin ligase, BirA, and a sortase recognition motif (LPXTG) to attach a variety of labels directly to the antibody including fluorophores, enzymatic substrates (HRP, AP), peptides, drugs as well as solid supports. AbFlex®HP1 γ antibody was expressed as full-length IgG with mouse immunoglobulin heavy and light chains (IgG2a isotype) in mammalian 293 cells.

Heterochromatin Protein 1 gamma (HP1 gamma) is one of the mammalian homologues of Drosophila HP1, first identified through its role in the maintenance of regions of the genome in a heterochromatic state. HP1 gamma contains a chromo domain and a chromo shadow domain. Through the chromo domain, HP1 proteins are recruited to regions of chromatin that exhibit methylation of lysine 9 of histone H3.

Immunogen: This HP1γ antibody was raised against recombinant full-length mouse HP1γ.

Buffer: Purified in 140 mM Hepes (pH 7.5), 70 mM NaCl, 32 mM NaOAc, 30% glycerol, and 0.035% sodium azide. Sodium azide is highly toxic.

Application Notes:

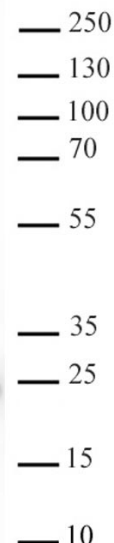
Applications Validated by Active Motif:

WB: 0.5-2 µg/ml dilution

AbFlex® recombinant antibodies are genetically derived from DNA sequences of parental hybridoma clones.

Storage and Guarantee: Some products may be shipped at room temperature. This will not affect their stability or performance. Avoid repeated freeze/thaw cycles by aliquoting items into single-use fractions for storage at -20°C for up to 2 years. Keep all reagents on ice when not in storage. This product is guaranteed for 12 months from date of receipt.

This product is for research use only and is not for use in diagnostic procedures.



AbFlex® HP1 γ antibody (rAb) tested by Western blot.

20 µg of HeLa whole cell extract was run on SDS-PAGE and probed with AbFlex HP1 beta antibody at 0.5 µg/ml.