

AbFlex® Estrogen Receptor α antibody (rAb)**Catalog Nos:** 91411, 91412**RRID:** AB_3216302**Application(s):** WB**Reactivity:** Mouse, Wide Range Predicted**Quantities:** 100 μ g, 10 μ g**Purification:** Protein A Chromatography**Host:** Mouse**Isotype:** IgG2a**Molecular Weight:** 66 kDa

Background: AbFlex® antibodies are recombinant antibodies (rAbs) that have been generated using defined DNA sequences to produce highly specific, reproducible antibodies. Each AbFlex antibody contains a 6xHis Tag, a Biotinylation Tag for enzymatic biotin conjugation using the biotin ligase, BirA, and a sortase recognition motif (LPXTG) to attach a variety of labels directly to the antibody including fluorophores, enzymatic substrates (HRP, AP), peptides, drugs as well as solid supports. AbFlex Estrogen Receptor α antibody was expressed as full-length IgG with mouse immunoglobulin heavy and light chains (IgG2a isotype) in mammalian 293 cells.

ER- α (estrogen receptor α) is a ligand-activated transcription factor composed of several domains important for hormone binding, DNA binding and activation of transcription. ER- α localizes to the nucleus where it may form a homodimer or a heterodimer with estrogen receptor 2. Estrogen and its receptors are essential for sexual development and reproductive function, but also play a role in other tissues such as bone. Estrogen receptors are also involved in pathological processes including breast cancer, endometrial cancer and osteoporosis.

Immunogen: This ER α antibody was immunized with a peptide corresponding to amino acid residues 578-595 of human ER α .

Buffer: 140 mM Hepes, pH 7.5, 70 mM NaCl, 32 mM NaOAc, 0.035% sodium azide, 30% glycerol

Application Notes:

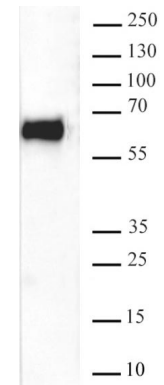
Applications Validated by Active Motif:

WB*: 0.5 – 2 μ g/ml

*Note: Many chromatin-bound proteins are not soluble in a low salt nuclear extract and fractionate to the pellet. Therefore, we recommend a High Salt / Sonication Protocol when preparing nuclear extracts for Western Blot. For optimal results in Western blotting, primary antibody incubations should be performed at room temperature. Individual optimization may be required.

Storage and Guarantee: Some products may be shipped at room temperature. This will not affect their stability or performance. Avoid repeated freeze/thaw cycles by aliquoting items into single-use fractions for storage at -20°C for up to 2 years. Keep all reagents on ice when not in storage. This product is guaranteed for 12 months from date of receipt.

This product is for research use only and is not for use in diagnostic procedures.



AbFlex® Estrogen Receptor α antibody tested by Western blot. MCF7 Estradiol treated nuclear extract (20 μ g per lane)* was run on SDS-PAGE and probed with Estrogen Receptor α antibody (0.5 μ g/mL).