

AbFlex® ALKBH2 antibody (rAb)

Catalog Nos: 91433, 91434**Application(s):** WB**Reactivity:** Human**Quantities:** 100 µg, 10 µg**Purification:** Protein A Chromatography**Host:** Rabbit**Isotype:** IgG2a**Concentration:** 1 µg/µl**Molecular Weight:** 29 kDa

Background: AbFlex® antibodies are recombinant antibodies (rAbs) that have been generated using defined DNA sequences to produce highly specific, reproducible antibodies. Each AbFlex antibody contains a 6xHis Tag, a Biotinylation Tag for enzymatic biotin conjugation using the biotin ligase, BirA, and a sortase recognition motif (LPXTG) to attach a variety of labels directly to the antibody including fluorophores, enzymatic substrates (HRP, AP), peptides, drugs as well as solid supports.

AbFlex® **ALKBH2** antibody (biotin) was expressed as full-length IgG with mouse immunoglobulin heavy and light chains (IgG2a isotype) in mammalian 293 cells. The antibody was directly labeled with biotin using the biotin ligase, BirA.

ALKBH2 (AlkB Homolog 2, Alpha-Ketoglutarate Dependent Dioxygenase) is a member of ALKBH protein family. It can repair alkylated DNA and RNA containing 1-methyladenine and 3-methylcytosine by oxidative demethylation. **ALKBH2** can also repair alkylated DNA containing 1-ethenoadenine (in vitro). Has strong preference for double-stranded DNA. It can release modified bases from both DNA and RNA. The oxidative demethylation requires molecular oxygen, alpha-ketoglutarate and iron.

Immunogen: This antibody was raised against a full length ALKBH2 protein.

Buffer: Purified IgG in 140 mM Hepes pH 7.5, 70 mM NaCl, 32 mM NaOAc, 0.035% sodium azide, and 30 % glycerol. Sodium azide is highly toxic.

Application Notes:

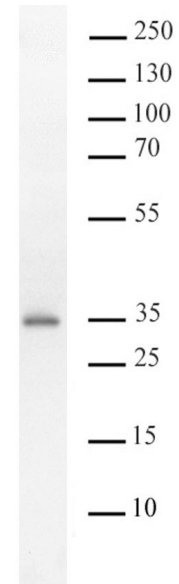
Applications Validated by Active Motif:

WB*: 0.5 - 2 µg/mL

For optimal results, we recommend the addition of 0.05% Tween 20 to all blocking solutions to reduce background. Individual optimization may be required.

Storage and Guarantee: Some products may be shipped at room temperature. This will not affect their stability or performance. Avoid repeated freeze/thaw cycles by aliquoting items into single-use fractions for storage at -20°C for up to 2 years. Keep all reagents on ice when not in storage. This product is guaranteed for 12 months from date of receipt.

This product is for research use only and is not for use in diagnostic procedures.



AbFlex® ALKBH2 antibody (rAb) tested by Western blot.

Whole cell extract of HeLa (40 µg / lane) was probed with ALKBH2 antibody (rAb) at 2 µg/mL.